

CARLIGHT CARAVANS





Casetta

This two berth model has much of the luxury of the larger and heavier Caribbean but through the use of modern materials and techniques it is capable of being towed by cars of 1½ litres capacity. The body exterior is a glass-fibre laminate and the elimination of exposed fixing screws and beadings results in an unusually clean look which stays that way. Torsion bar independent suspension has been adopted for the Casetta, a reliable and very suitable system having been found to carry the weight involved. Accommodation for clothing for two people is adequate for almost continuous occupation and the excellent insulation of the unique body construction coupled with the heating provided by a small but highly efficient flue-ed gas fire make the Casetta suitable for long term habitation at home and abroad and in all seasons of the year.

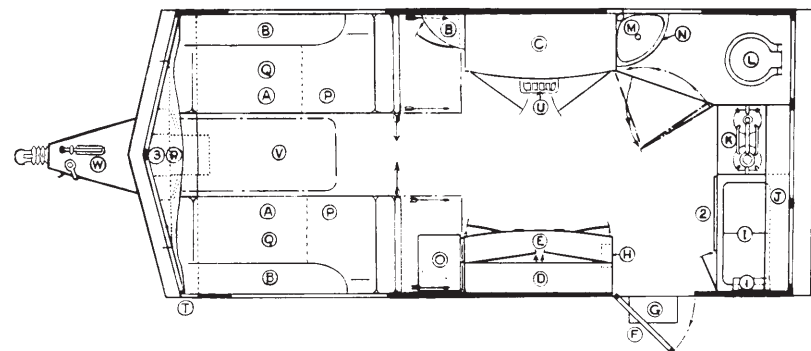
KEY

- | | |
|--|--|
| (A) Bed/settee (pull in direction of arrows to make two single or a double bed). | (N) Butane Gas Cylinder. |
| (B) Roof Locker. | (O) Stool and Laundry Bin (moveable). |
| (C) Double Wardrobe. | (P) Drawers under Settee. |
| (D) China Cabinet. | (Q) Locker. |
| (E) Sideboard. | (R) Shelf under Front Window. |
| (F) Stable Type Door. | (S) Cocktail Cabinet. |
| (G) Folding Step. | (T) Outside Door to Awning Locker. |
| (H) Rubbish Bin. | (U) Gas Fire. |
| (I) Sink and Drainer with Pump, Cupboard and Drawer beneath. | (V) Table (moveable). |
| (J) Kitchen Roof Locker. | (W) B. and B. Hitch with Jockey Wheel. |
| (K) Gas Cooker with Oven. | |
| (L) Toilet Unit. | |
| (M) Washbasin. | |

OPTIONAL EXTRAS

- | |
|------------------------------|
| (1) Butane Gas Water Heater. |
| (2) Refrigerator. |

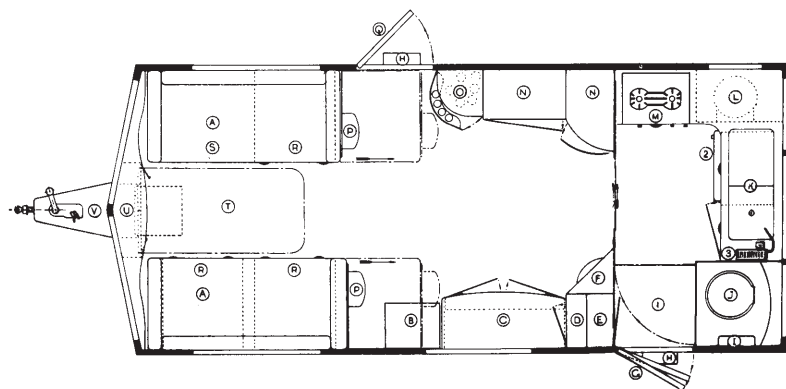
PLAN



Caribbean

This outstanding two berth caravan provides superlative living comfort for two people with an impeccable road performance. Developed over a number of years it combines all the attractive features of a brilliant original design with many minor and major improvements suggested from time to time by a great number of experienced caravanners who own Caribbeans. The two extremely comfortable settees can be used as a double or two single beds. There are two large wardrobes and six drawers with several small cupboards providing adequate storage for everything required on a long stay away from home. A handsome radiant heat gas fire is set in a handsome unit on the kitchen bulkhead which results in unusually good sound-proofing between the main saloon and the toilet.

PLAN



KEY

- | | |
|---|--|
| (A) Bed/Settee (pull in direction of arrow to make single bed) | (L) Butane Gas Cylinder. |
| (B) Stool and Laundry Bin (movable) | (M) Gas Cooker. |
| (C) Chest of Drawers, Shallow Cupboard at bottom for small bottles. | (N) Wardrobe. |
| (D) China Cabinet. | (O) Wine Cabinet. |
| (E) Food Cupboard. | (P) Table flap. |
| (F) Gas Fire (with mirror above fire). | (Q) Door (main entrance). |
| (G) Stable Type Door (entrance to kitchen). | (R) Drawer under Bed/Settee. |
| (H) Folding Step. | (S) Locker. |
| (I) Fold-Down washbasin. | (T) Table (movable). |
| (J) Toilet Unit. | (U) Cocktail Cabinet (under front window shelf). |
| (K) Sink and Drainer with rocker pump, Cupboard and drawers beneath (Formica cover to fit flush over sink and drainer). | (V) B. and B. Tow-bar and jockey wheel. |

OPTIONAL EXTRAS

- (1) Shower.
- (2) Refrigerator.
- (3) Butane Gas water heater.



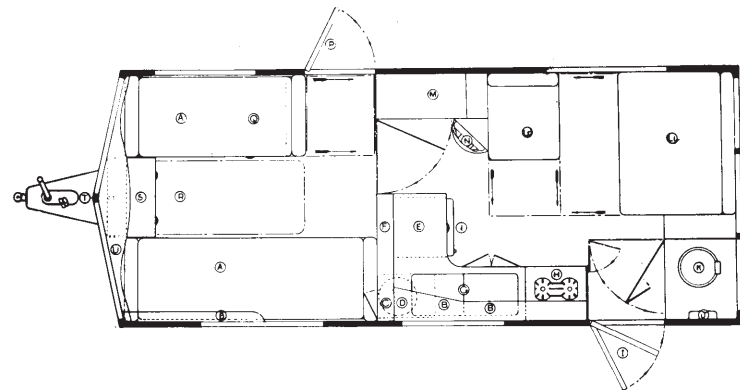
Cosmopolitan

This is the four berth for the family man with a modest sized car and children who are rapidly growing up. It is probable that no other touring caravan can be so effectively divided into two separate rooms. Placing the kitchen units in the centre enables the beds to be positioned at each end of the caravan and the fixed rigid partition minimises the possibility of the occupants in the rear section disturbing those in the front. A fitted radiant heat gas fire adequately flue-ed through the roof provides “fug” free heating for winter caravanning. The toilet compartment when in use is remarkably spacious but takes up little space when unoccupied. In addition to a chemical closet a toilet basin with waste water outlet is provided.

KEY

- | | |
|---|--------------------------------------|
| (A) Two single beds. | (K) Chemical toilet. |
| (B) Roof Locker. | (L1 & L2) Double Bed. |
| (C) Glass Cupboard. | (M) Wardrobe. |
| (D) Butane Gas Cylinder. | (N) Gas Fire with flue to exterior. |
| (E) Formica work top, drawer beneath, refrigerator (an optional extra), is also placed beneath. | (P) Front Entrance Door. |
| (F) Glass shelf, upward sliding partition door. | (Q) Drawer under Settee. |
| (G) Sink and Drainer with Cupboard beneath. | (R) Table. |
| (H) Gas Cooker. | (S) Chest of Drawers. |
| (I) Stable-door rear entrance. | (T) “B & B” hitch with jockey wheel. |
| (J) Fold-down washbasin. | (U) Shelf under front window. |
| | OPTIONAL EXTRA |
| | (1) Refrigerator. |

PLAN

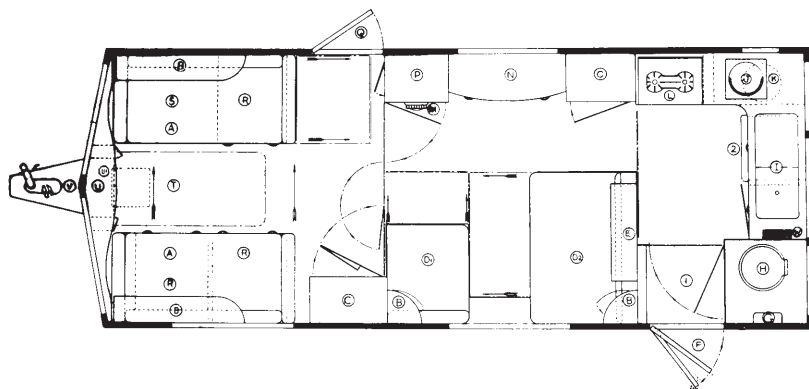


Continental

No other four berth touring caravan has ever been produced to equal the Continental. Not only does it provide for sleeping four, but the ingenious front single bed arrangement permits the fitting of adequate storage space for the clothing of four people. There are two spacious wardrobes and six drawers in the lounge as well as a very roomy airing cupboard. The lounge divides into two sections with a substantial full height partition leaving a wardrobe and some of the drawers in each section. The table can be used at the centre dinette so late meals can be prepared without disturbing the occupants using the front beds. The "Continental" is being used for living in all the year round by many people who have to be continuously on the move yet it can be towed at high speeds by cars of 3 litres capacity.



PLAN



KEY

- | | |
|---|--------------------------------------|
| (A) Two single beds (beds made up by sliding in direction of arrows). | (K) Butane Gas Cylinder. |
| (B) Roof Locker. | (L) Gas Cooker. |
| (C) Wardrobe. | (M) Gas Fire. |
| (D1 & D2) Double bed. | (N) Chest of Drawers. |
| (E) Glass Cupboard. | (P) Airing Cupboard. |
| (F) Stable-door entrance to Kitchen. | (Q) Front Entrance Door. |
| (G) Fold-down washbasin. | (R) Drawers under Settees. |
| (H) Chemical Toilet. | (S) Bedding Locker. |
| (I) Sink and Drainer, Cupboard and Drawer under sink, refrigerator (an optional extra) is also placed under Drawer. Formica cover fits over Sink and Drainer. | (T) Table. |
| (J) Rubbish Pail. | (U) Shelf under front window. |
| | (U1) Cocktail Cabinet. |
| | (V) "B & B" hitch with jockey wheel. |

OPTIONAL EXTRAS

- | |
|------------------------------|
| (1) Shower. |
| (2) Refrigerator. |
| (W) Butane Gas Water Heater. |

GENERAL CONSTRUCTION

(ALL MODELS EXCEPT "CASETTA")

CHASSIS. A stiff rectangular frame of 3" x 2" and 2" x 2" angle section is bolted to the monocoque body and drawbar which is boxed at stress points to which is fitted a B. & B. 'BETA' hitch with hydraulic damping to the overrun braking mechanism. After much experimental work with various independent suspension systems a conventional solid beam axle of adequate dimensions for each model is mounted on long semi-elliptic springs. Wheels and tyres are heavy duty light truck type.

BODY. The illustration on the cover page is of the "Casetta" model which typifies the general appearance of all models. The 'lantern' type roof which is brought out to the full van width at the rear is elegant and practical, because it provides unequalled draught-free ventilation with adequate headroom in the toilet and kitchen at the rear. The interior panelling is resin bonded to the framing which is also bonded to the floor and roof so producing a "Monocoque" construction of great strength.

EXTERIOR PANELLING. The flat side panels are aluminium and the front and rear ends moulded glass fibre/Polyester resin laminations.

ROOF. The framing is a close network of transverse and longitudinal members with resin bonded plywood glued to both sides, the plywood ceiling being covered with a P.V.C. foil. The exterior is covered with glass cloth bonded with Polyester resin. This covering is completely free from joints and produces a leak proof roof of great durability.

ENTRANCE DOORS. Front doors which are on the offside have a fixed glass panel set in the upper half. Rear doors on the nearside give easy access to the kitchen when shopping with the caravan on tour. The upper half of the door is of the 'stable' type. Top quality cylinder locks are fitted and give complete security. The handles are recessed, a safety requirement in most European countries.

INSULATION. The wall and roof cavities are filled with glassfibre or 'Isoflex.'

WINDOWS. The aluminium frames of the windows are heavily anodised to prevent corrosion even in coastal atmospheres.

GAS INSTALLATION. Internal stowage for a 32lb. cylinder is provided on all models. Gas piping is of adequate size to ensure the proper functioning of all appliances. All joints in the system are accessible. Where fitted, gas fires are of the radiant heat type and are adequately flue-ed. Floor vents are positioned beneath them so that air is warmed before being drawn into the caravan thus providing for a warm but fresh atmosphere.

ELECTRIC LIGHTING. Completely independent of the road light equipment this installation is provided with a separate input plug on the towbar. Light fittings are of the standard size bayonet cap type so that mains voltage bulbs can be fitted for which the wiring is adequate. Suitable 12 volt bulbs are normally supplied with the caravan so that current can be taken from the battery of the towing vehicle.

ROAD LIGHTS. A 'jumper' cable permanently fitted to the towbar carries a 7-way connector which provides for road lights, stop lights and indicator lights and one spare way for ancillary equipment. Front side lights and handsome rear light assemblies are fitted combining rear light, brake light and indicator light. The number plate in the centre of the rear panel is also provided with a light to illuminate it.

WHEEL JACKING. Provision is made in the body sides aft of the wheels to attach a screw lifting jack of the type supplied with most modern cars.

FURNISHINGS. Foam or spring interior mattresses covered in fabric of good quality, and curtains in matching or contrasting velour. 'Kosset' fitted carpet.

DATA

Detail	Casetta	Caribbean	Cosmopolitan	Continental
Number of Berths	2	2	4	4
LENGTH BODY (excluding 'V' front)	14' 3"	15' 3"	15' 3"	17' 3"
LENGTH INTERIOR	14' 0"	15' 0"	15' 0"	17' 0"
LENGTH OVERALL including drawbar	17' 0"	18' 1"	18' 1"	20' 0"
WIDTH INTERIOR	6' 2"	6' 7"	6' 2"	6' 9"
WIDTH OVERALL	6' 6"	7' 1"	6' 7"	7' 3"
HEIGHT (HEADROOM INSIDE)	6' 2"	6' 3"	6' 3"	6' 4"
HEIGHT OVERALL	8' 0"	8' 5"	8' 3¼"	8' 4½"
WEIGHT APPROX. EX-WORKS	17 cwts.	23 cwts.	22 cwts.	26 cwts.
TOWING HEIGHT TO BOLT HOLES OF HITCH	13"	15¼"	15¼"	16½"
WHEEL SIZE	4.50 x 15	4.50 x 16	4.50 x 16	5.50 x 16
TYRE SIZE	6.40 x 15	6.00 x 16	6.00 x 16	6.50 x 16
BRAKE SIZE	10"	10"	10"	12"
CORNER LEGS	quick action	quick action	quick action	quick action
WATER TANK	8 galls.	8 galls.	9 galls.	9 galls.

The following optional equipment is available on most models :—

Butane gas refrigerator
 Carlight roller fly screens
 Fly screens for lantern windows
 Battery operated fitted radio
 Butane gas water heater

Shower bath
 Screw lifting jack
 Carlight equaliser/stabiliser
 Electrically operated reversing stop
 Carlight china

See separate leaflet for prices and conditions of sale

We reserve the right to change the specification without notice



CARLIGHT TRAILERS LIMITED
CHURCH LANE - SLEAFORD - Lincs - ENGLAND

TELEPHONE: SLEAFORD 120

