

Carlight



Carlight



Since the start of Carlight's caravan manufacturing history over 50 years ago quality has always been the number one priority and this is still the same today with up to 600 man hours being put into making just one commander caravan. The time spent making a carlight to the ultimate standard is pure craftsmanship and our policy of producing as much in house as possible means we can ensure this quality continues.

Chassis are galvanised after welding. The joints in the timber frame are halved, screwed and glued. The side walls jig built and the main exterior panelling is 20 gauge aluminium. All these are just a small selection of the finer detail points that make a carlight something really special.

A Carlight is built to last, and once people have owned a carlight they

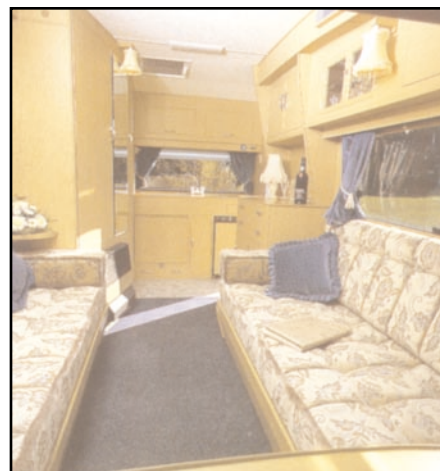
seldom buy anything else. The elegant shape, innovative design, and modern materials combine together to make a Carlight the ultimate in luxury caravanning.

1987 sees the introduction of one further model to the Carlight range. The 154 [15ft 4 birth] extending the range to 4 models - 132, 152, 154 and the 184.



Carlight

- Right: The interior is a classic example of Carlight's attention to detail, with a choice of over 200 fabrics to choose from.
- Below: The 132 offers the discerning customer excellent value for money, being compact but spacious.
- Left: Carlight's range typified here by the Commander 152, is built with sheer quality and luxury in mind.



The Commander 132 offers the customer a compact but spacious caravan, built to the quality that has come to be expected of Carlight.

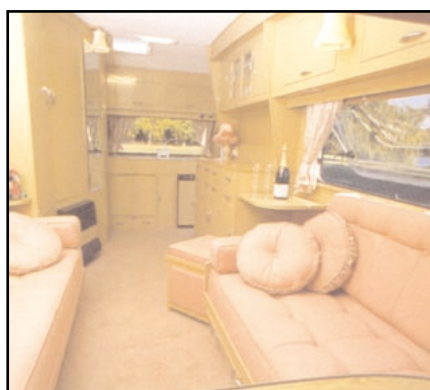
The comfortable seating area converts into: two comfortable singles or a spacious double bed, using the unique Carlight method of sliding one bed across the van.
The Kitchen area is a classic example

of Carlight's excellent attention to detail, seemingly with a place for everything (even a bread bin and chopping board are standard fitments). The kitchen boasts a full oven, hob & grill, electronic ignition refrigerator and all of the kitchen work surfaces are formica faced for durability and cleaning.

Storage and wardrobe space are excellent, the latter having a hanging

height of 46" and a width of 21.5".

The 132 offers an extremely attractive self contained toilet compartment in a very pleasing beige colour, built in wash basin, extensive cupboard space, domestic sized shower tray and an attractive vanity unit are just part of the luxury that the Commander 132 offers.



The Commander 152 enjoys the same luxury features as the 132 but has considerably more cupboard space. The double sized wardrobe has a total width of 41.5" and is divided into ladies and gents section measuring 54" and 46" high respectively.

The sideboard in the 152 is fitted with four drawers and 3 large sized cupboards, forming part of the generous

storage space available to 152 owners. Both 15ft and 13ft Carlight's are heated by a Carver Caravelle gas fan heater, with automatic ignition and flame failure device.

A Carver Cascade II provides hot water in all the vans. This together with the self priming 12v pump and on board tank provide trouble free hot and cold water at the turn of a tap.

Carlight

- 👑 Top: The aerodynamic styling means towing is simplicity itself.
- 👑 Far Left: The double bed leaves an ample walkway, showing just part of the overall spaciousness offered.
- 👑 Above: The internal decor and layout is expertly designed to maximise comfort.
- 👑 Middle: The short bed is just one example of the many special features available.



Carlight

- ❖ Top Left: The end kitchen allows seating to be arranged in a sociable way.
- ❖ Top Right: The bunk beds are cleverly engineered and extremely comfortable.
- ❖ Above: The central dining area can be easily rearranged to give the 154 ample seating for over 7 people.
- ❖ Far Left: This shows how convenient the 154 is for just 2 people - breakfast already waiting in the morning.
- ❖ Left: The classic overall design makes it a must for the 4 berth customer.

This luxurious 15ft 4 berth caravan is new to the Carlight range for 1987. A brilliantly designed layout gives a very "sociable" van allowing many people to be comfortably seated together when required, while privacy from the bunk beds can be gained when necessary by drawing the dividing curtain.

The bunk arrangement is cleverly engineered changing the central dining

area into the lower bunk and the top bunk being supported by two rigid steel poles. Comfort of both beds is conducive to a good nights sleep.

The centre dining area has the added advantage that it can be turned into one long settee when extra seating space is required.

The kitchen, toilet and wardrobe

accommodation are similar to the 152 and 132.

The 154 has, like all the other models in the commander range, full 12v and 240v lighting circuits together with both 12v and 240v power points and a sophisticated charger unit.

A detailed illustration of layout and features is shown on page 7.



Carlight

- ✦ Above: This 18ft 4 berth caravan comes packed with many extra quality features..
- ✦ Left: The cupboard space and features are well designed and beautifully finished.
- ✦ Right: The toilet/shower compartment is typical of the overall luxury offered by the 184, a similar arrangement is used in all models



Sheer luxury is the hallmark of the Carlight Commander 184, the extremely comfortable seating area can be converted to one double bed or two singles plus one single bed with a bunk over allowing very comfortable sleeping accommodation.

The 184 includes many extra features such as a cocktail cabinet and even greater storage space. A Carver 3000

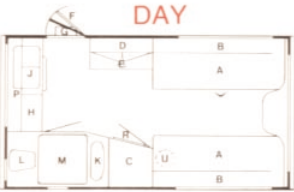
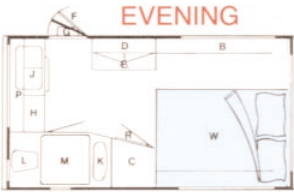
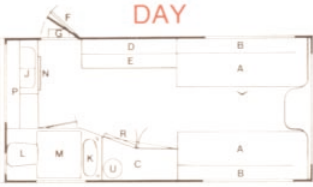
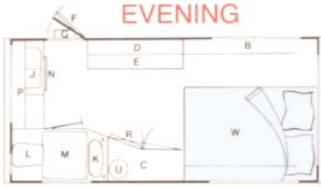

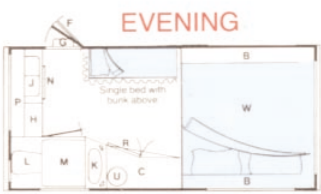


space heater is fitted with adjustable air outlets positioned conveniently for optimum comfort during cool spells. (This system also allows cool air to be circulated during hot weather to keep you as refreshed as possible.) Permanent draught free ventilation prevents condensation occurring.

A detailed layout plan is shown on the opposite page with further emphasizes

the spaciousness and luxury of this 18ft 4 birth caravan.

Large seating areas coupled with vast amounts of cupboard space make the Commander 184 one of the most impressive caravans available today.

specifications

| | | |
|--|---|--|
| <p>COMMANDER 132</p> <div>   </div> | <p>COMMANDER 132 Berths: 2 Weight Ex Works: 16.50 cwt [838 kg] Max Laden Weight: 23.60 cwt [1200 kg] Length Internal: 13' 6 1/4" [4.12m] Length Overall: 16' 11" [5.16m] Height Overall: 8' 3 1/4" [2.52m] Height Internal: 6' 3 1/2" [1.90m]</p> | <p>132 BEDSIZES 2x Singles 6'6" x 2'3" [1.98m x 0.685m] Double 6'6" x 4'6" [1.98 x 1.37m]</p> |
| <p>COMMANDER 152</p> <div>   </div> | <p>COMMANDER 152 Berths: 2 Weight Ex Works: 17.50 cwt [889 kg] Max Laden Weight: 25.60 cwt [1300 kg] Length Internal: 15' 4 3/8" [4.68m] Length Overall: 15' 10" [4.83m] Height Overall: 8' 3 1/2" [2.52m] Height Internal: 6' 3" [1.90m]</p> | <p>152 BEDSIZES 2x Singles 6'6" x 2'3" [1.98m x 0.685m] Double 6'6" x 4'6" [1.98 x 1.37m]</p> |
| <p>COMMANDER 154</p> <div>   </div> | <p>COMMANDER 154 Berths: 4 Weight Ex Works: 18 cwt [914 kg] Max Laden Weight: 25.60 cwt [1300 kg] Length Internal: 15' 4 3/8" [4.68m] Length Overall: 15' 10" [4.83m] Height Overall: 8' 3 1/2" [2.52m] Height Internal: 6' 3 1/2" [1.90m]</p> | <p>154 BEDSIZES 1x Double 6'6" x 4'4" [1.98 x 1.37m] 1x Single 6'0" x 2'3" [1.83m x 0.685m] 1x bunk 5'11" x 2'0" [1.80m x 0.685m]</p> |
| <p>COMMANDER 184</p> <div>   </div> | <p>COMMANDER 184 Berths: 4 Weight Ex Works: 24.17 cwt [1228 kg] Max Laden Weight: 31.50 cwt [1600 kg] Length Internal: 18' 10" [5.74m] Length Overall: 19' 4" [5.89m] Height Overall: 8' 6 1/4" [2.59m] Height Internal: 6' 4 1/2" [1.94m]</p> | <p>184 BEDSIZES 2x Singles 6'6" x 2'3" [1.98m x 0.685m] making into one double 6'6" x 4'6" [1.19m x 1.37m] 1x Single 6'0" x 2'3" [1.83m x 0.685m] 1x bunk 5'11" x 2'0" [1.80m x 0.685m]</p> |

KEY:

- | | |
|---|---|
| <p>A Single bed/settees with lockers beneath [pull in direction of arrow to make double bed] B Roof Lockers C Wardrobe D China cupboard E Sideboard F Entrance door G Folding step H Cooker J Sink K Wash basin L Space for toilet M Shower tray N Refrigerator</p> | <p>P Kitchen unit R Gas space fan heater S Shelf with locker and magazine rack beneath T Built in gas cylinder U Storage water heater V Dinette W Double or two single beds X Single seats Y Small table Z Welsh dresser</p> |
|---|---|

OPTIONS

As each caravan we make is individually handbuilt our customers can express their personal taste through their own choice of features such as layout, special equipment etc. All these items ensure that each caravan is unique.





Carlight Trailers Ltd,
Carlight House,
Church Lane,
Sleaford,
Lincolnshire NG34 7DE
Tel: [0529] 302120

The illustrations and descriptions given in this brochure are intended as a general guide only. The company reserves the right to make, at any moment and without notice any change in specification of any caravan or any equipment supplied with it.